

CARPET KNIFE Generation X Setup Sheet

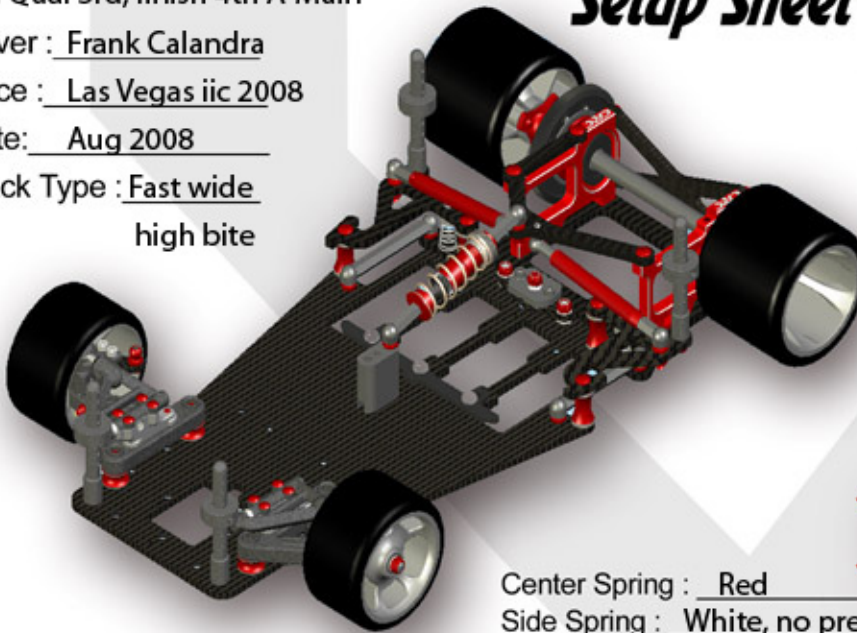
Stock, Qual 3rd, finish 4th A-Main

Driver : Frank Calandra

Race : Las Vegas iic 2008

Date: Aug 2008

Track Type : Fast wide
high bite

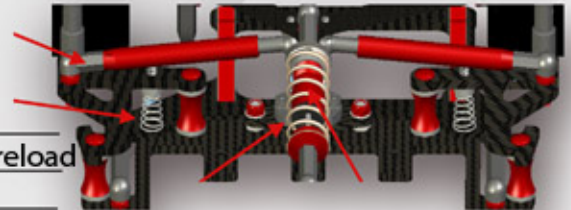


Rear End



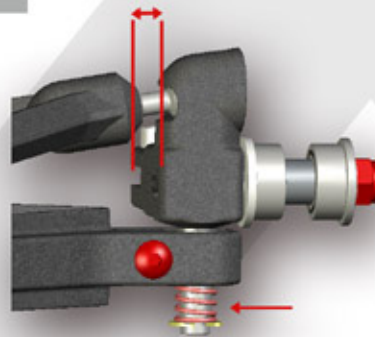
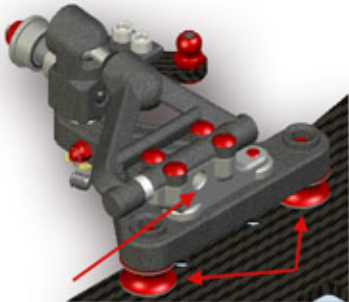
Battery Position: Back

Center Spring : Red
Side Spring : White, no preload
Damper Tube : 20000
Shock Oil : _____ wt

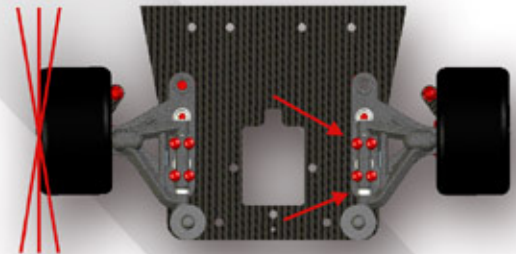


Frank used the new Encore shock coming soon from CRC

Front End



Ride Height Adjuster : long ball upper arm
Caster Block : 5 - dynamic 0
Front Spring : .50mm, little load
Camber : 0.5 mm 0



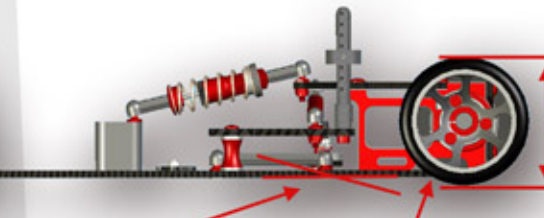
Caster Shims : 2 washers rear
Toe Angle : 0 0

Tires - Ride Height - Droop

Front Tire Cmpd : Black
Tire Size : 1.65
Treatment :: glued

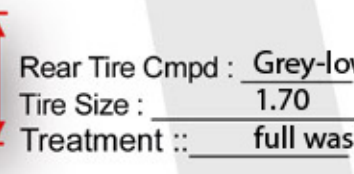


Ride Height : Front 3.5 mm
Rear Pod Droop : 0.5



Center : 4 mm

Rear Tire Cmpd : Grey-low
Tire Size : 1.70
Treatment :: full wash



Other Notes: New CRC exclusive short diff hub with the 3349 Brushless Pod conversion for perfect center motor placement.

CRC's new "Grey-low" tires. These are mostly yellow compound with a ring of grey on the outside... hence "Grey-low"

CRC/Black Art Audi R8C body



CALANDRA RACING CONCEPTS
6785 MARTIN STREET ROME, NY 13440, USA
PHONE & FAX: (315) 338-0867

<http://www.teamcrc.com>
info@teamcrc.com